



DEUTSCH AUTOSPORT
INTERCONNECTION
SOLUTIONS
FOR PROFESSIONAL MOTOR SPORTS

High-Performance Connectors
Designed for Harsh-Environment Motorsport



DEDICATED INDUSTRIAL ENGINEERING & MANUFACTURING SITES

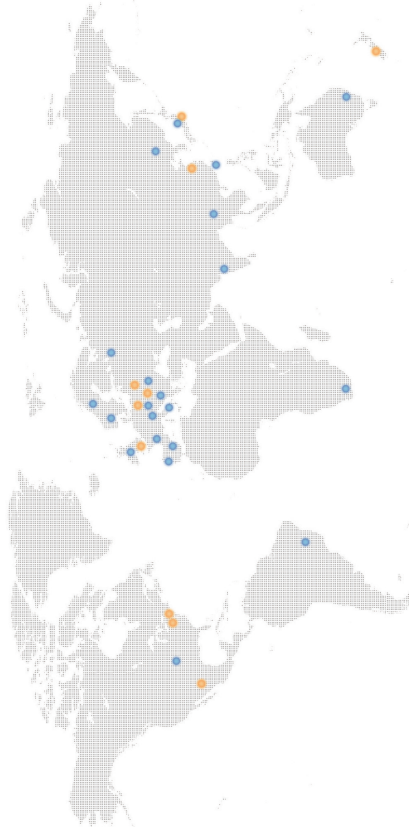
- Bydgoszcz, Poland
- Christchurch, New Zealand
- Hermosillo, Mexico
- Landisville, USA
- Trutnov, Czech Republic
- Tokyo, Japan
- Shanghai, China
- Darmstadt, Germany
- Harrisburg, USA

PRODUCT INFORMATION CENTERS

- Austria
- Australia
- Belgium
- Brazil
- China
- Czech Republic
- Denmark
- Estonia
- Finland
- France
- Germany
- Greece
- Hungary
- India
- Ireland
- Italy
- Japan
- Latvia
- Lithuania
- Luxembourg
- Netherlands
- Norway
- Poland
- Portugal
- Russia
- Slovakia
- Slovenia
- South Africa
- South Korea
- Spain
- Sweden
- Switzerland
- Taiwan
- Turkey
- United Kingdom
- United States

FAST FACTS

- Annual Revenue: US \$14+ billion (2011)
- R&D Investment: 5% of sales per year (approx.)
- Patents issued/pending: 20,000+
- Employees: 100,000+
- Engineers: 8,000+



DEUTSCH AUTOSPORT INTERCONNECTION SOLUTIONS

CONSISTENTLY LEADING THE WAY IN RESEARCH, DEVELOPMENT, INNOVATION, RELIABILITY & SERVICE

TE Connectivity (TE) with its DEUTSCH Autosport connection systems offers unrivalled expertise in the design and manufacture of interconnection solutions for harsh environments. With over 40-years of international experience, Deutsch products are well proven in the Aerospace, Defence, Industrial Transportation and Autosport markets.

In the early 1990's DEUTSCH products were the first to pioneer a range of interconnection solutions specifically for the Autosport industry, enabling them to reach their position as market leader. The AS Series and AS Micro Series radically changed the face of autosport connection technology. Following the success of these products, DEUTSCH Autosport was established to attend to the growing needs of the autosport teams and harness houses.

A knowledgeable and experienced team of experts, supported with considerable investment in research and backed by an international distribution network, ensures the Deutsch autosport range of connectors continue to meet the constantly evolving technical challenges faced in this dynamic and demanding industry.

Specified across the entire autosport industry, DEUTSCH products dominance in the autosport industry has been proven many times, with world champions across practically every discipline choosing Deutsch Autosport connectors as the most reliable, light weight and technologically advanced products available.

TE Components ... **TE Technology** ... **TE Know-how** ...
AMP | Agastat | Oll | Hartman | Kinostat | Microdot | Nannac | Rajndern | Reuther | IBS/ISGH

Get your product to market faster with a smarter, better solution.

CONTENTS

- 4 Product Overview
- 6 AS Micro Xtra™ HE - 3 Way Connector
- 8 AS Micro Xtra™ HE - 5 Way Connector
- 10 AS Micro Xtra™ HE - 6 Way Connector
- 12 AS Ultra™ HE and AS Micro Ultra™ HE (ASU) Series Connectors
- 14 AS Micro™ HE (ASL) Series Connectors
- 16 AS Rally Micro (ASR) Series Connectors
- 18 AS Composite (ASC) Series Connectors
- 20 AS Mini Series Connectors
- 22 AS Series Connectors
- 28 AS Double Density (ASDD) Series Connectors
- 30 AS Micro HE Hermetic Series Connectors
- 31 AS Micro Hermetic (Jam-Nut) Series Connectors
- 32 AS Hermetic Fuel Tank Series Connectors
- 34 AS Micro™ HE Fuel Immersible Series Connectors
- 36 AS Heavy Duty (ASHD) Series Connectors
- 38 AS Co-ax Series Connectors
- 38 Portable Antenna
- 39 ASDD System 30 contact
- 39 Special Contacts
- 40 Aluminium Wire Options
- 40 AS Flangless option
- 41 Clinchnut AS Series Connectors
- 42 Through Bulkhead
- 43 AS Filter / Fibre Optics Series Connectors
- 44 Termination Boots and Accessories
- 45 How to Order
- 46 Reference Guide

Product Overview

The original Autosport connector – the AS Series Connector – continues to set the standard for the autosport industry. Invented by DEUTSCH Autosport for the 93/94 season, the AS Series Connector has been used by race winning teams throughout autosport ever since.

TE Connectivity (TE) with its DEUTSCH connectors continues to push the boundaries of technology and innovation, consistently driving the market forwards with new products that match the ever increasing demands of lower weight, smaller size and better performance. All DEUTSCH connectors are thermal cycle tested and environmentally sealed to IP67 when mated*. All DEUTSCH Autosport connectors also offer:

- Compact design/minimum space envelope
- Interfacial & wire sealing
- Boot termination feature
- PCB option
- Universal option available (not ASC)
- Standard crimp tooling
- Suitable for blind mating
- Visual indication of keypad orientation of connector
- Scoop-proof interface
- Shell-to-shell grounding (not ASC)
- Positive locking coupling mechanism
- No need for backshells or boot termination
- In-line and two hole mounting styles (not ASC)
- Surface finishing options
- Keypad options.

*1 metre for 30 minutes minimum

MATERIALS

Shell / coupling ring: High strength aluminum alloy with a conductive black zinc finish**

Contacts: Gold plated crimp contacts*

Insulators: Thermoplastic

Interface / wire seals:

Fluorinated silicone.

*Except hermetic connectors

**Except hermetic and ASC connectors

VIBRATION

All connectors undergo three rigorous tests for vibration and all exceed the following:

- Dynamic test – random on random 60g RMS in 3 axis.
- Endurance test – random 57g RMS in 2 axis for 8 hours each axis.
- Sinusoidal resonance to over 75g.

FLUID RESISTANCE

All connectors show no damage when exposed to most fluids used in most autosport applications.

AS SERIES CONNECTORS

Developed by Deutsch from the MIL-C-38999 Series 15 (Eurofighter connector), the AS Series Connector was the first range of high specification connectors designed by Deutsch Autosport specifically for the autosport market. The AS Series Connector offers weight and space saving over standard military designs and is available in a wide variety of options, with medium and high density arrangements up to 128 ways with four shell styles, and five keypad orientations. Refer to page 22 for technical specifications.

AS DOUBLE DENSITY (ASDD) SERIES CONNECTORS

Next generation connector technology developed by Deutsch Autosport, which brings together high density and high performance, inline with racing teams using smaller wire sizes. The AS Double Density range allows almost double the number of contacts to be packaged in the same shell as compared to the standard AS Series Connectors. Refer to page 28 for technical specifications.

AS MICRO HE HERMETIC SERIES CONNECTORS

A unique hermetic receptacle developed by DEUTSCH Autosport for transducers, sensors and instrumentation where space and performance is critical. The AS Micro HE Hermetic Series Connector offers high density, harsh environment sealing as standard and is more compact than any other product currently available on the market. Mounting and ease of termination has also been a major consideration with PCB style contacts and weld mounting (316 St) offered as standard. Refer to page 30 for technical specifications.

AS MICRO HERMETIC (JAM-NUT) SERIES CONNECTORS

An evolution of the AS Micro HE Hermetic Connectors featuring a jam-nut, this connector is ideally suited to fuel tank applications. Refer to page 31 for technical specifications.

AS HERMETIC FUEL TANK SERIES CONNECTORS

A range of hermetically sealed connectors designed specifically for autosport fuel tank applications. AS Hermetic Fuel Tank Connector provides a high degree of performance where normal resilient connectors would fail, by using glass to metal sealing in place of traditional plastic and elastomer inserts. Connectors are supplied with a fuel Immersible specification o-ring to provide a high standard of sealing between the connector and bulkhead. Refer to page 32 for technical specifications.

AS MICRO^{lite} HE FUEL IMMERSIBLE SERIES CONNECTORS

An evolution of the AS Micro^{lite} connector, the AS Micro^{lite} Fuel Immersible Connector contains a unique Deutsch designed fuel resistant elastomer insert which offers excellent resistance to racing fuel. An upgraded hermetic version, including an inline receptacle is also available. Refer to page 34 for technical specifications.

AS HEAVY DUTY (ASHD) SERIES CONNECTORS

A range of power connectors designed specifically for Autosport high current applications. The AS Heavy Duty Connectors are ideally suited to battery, alternator, starter motor and energy recovery system applications. Specially designed low insertion / extraction force contacts ensure maximum performance in extreme conditions. Refer to page 36 for technical specifications.

AS FILTER / FIBRE OPTICS SERIES CONNECTORS

TE Deutsch Autosport Connectors also offer Fibre Optic and Filter solutions. Refer to page 43 at the back of this brochure for more information.



AS Micro Xtra^{LITE} HE - 3 Way Connector

Ultra Compact Design (Size 2 shell)

- Minimum space envelope
- 3 Size #22 contacts
- PCB option
- Smaller and lighter than AS Ultra^{LITE} (ASU) series connectors

Easy Installation

- Positive locking coupling mechanism
- Suitable for blind mating
- Scoop proof interface
- Boot termination feature

Built to Withstand Harsh Environments

- Conductive black zinc finish
- Interfacial wire sealing
- Bonded and sealed insert to prevent moisture ingress



GENERAL SPECIFICATION

Contact Size	Shell Size	Max. Current (amps)	Durability (cycles of engagement & disengagement)	Dielectric Withstanding Voltage (kVAC)	No. of Keyway Orientations		Wire Sealing (mm)		Temperature (°C)	
					Min	Max	Min	Max		
ZZ	2	5	500	1500	6	0.76	1.37	-55	+170	

* The upper limit is the maximum internal hot-spot temperature resulting from the combination of the ambient temperature and heating due to current. Contact IE DEDTCH for more detail of specific products to meet your sealed electrical connection requirements.

CONTACTS & TOOLING PART NUMBERS

Contact Size	Socket	Pin	PCB Socket	PCB Pin	Filler Plug	Ins'g't Tool	Crimp Tool	Socket Positioner	Pin Positioner
ZZ	604984	604946-31	617282	617284-31	600500-22	605837	M2250/72-01	605464	605463

ORDERING INFORMATION

ASX

Range Ref:

- 0 = 2 Hole Flange Receptacle
- 1 = In-line Receptacle
- 2 = 2 Hole Flange Receptacle with PCB contacts
- 6 = Free Plug

Shell Size:

03

Contact Arrangement:

03

Insert Type:

- P = Pin
- S = Socket

Shell Keyways:

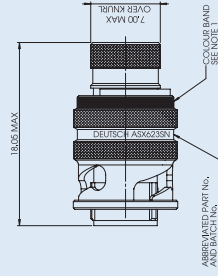
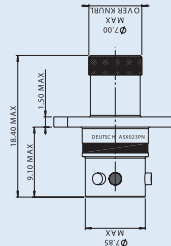
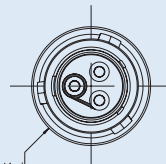
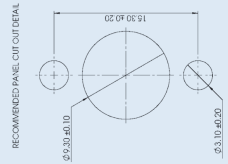
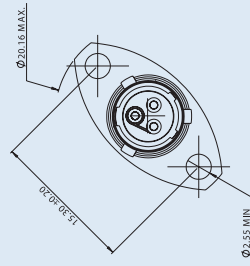
- N = Red (standard)
- A = Yellow
- B = Blue
- C = Orange
- D = Green
- E = Grey
- U = Violet
- (U = Universal for test harnesses) (Plug type 6 only)

Modification Code:

ACCESSORIES PART NUMBERS

Part Number	Accessories
ATM956-2	Gasket
	GN2

Boot Information	
Raychem	90 degree 223W601
Hellermann	1187-4-G 1182-4-G



AMERICAN PART No. AND BATCH No. SEE NOTE 2

AMERICAN PART No. AND BATCH No. SEE NOTE 2

AMERICAN PART No. AND BATCH No. SEE NOTE 2

All dimensions are in mm unless otherwise stated.

AS Micro Xtra^{LITE} HE - 5 Way Connector

Ultra Compact Design (Size 2 shell)

- Minimum space envelope
- 5 Size #24 contacts
- PCB option
- Smaller and lighter than AS Ultra^{LITE} (ASU) series connectors

Easy Installation

- Positive locking coupling mechanism
- Suitable for blind mating
- Scoop proof interface
- Boot termination feature

Built to Withstand Harsh Environments

- Conductive black zinc finish
- Interfacial wire sealing
- Bonded and sealed insert to prevent moisture ingress



GENERAL SPECIFICATION

Contact Size	Shell Size	Max. Current (amps)	Durability (cycles of engagement & disengagement)	Dielectric Withstanding Voltage (kV)	No. of Keyway Orientations		Wire Sealing (mm)		Temperature (°C)	
					Min	Max	Min	Max		
24	2	3	500	1000	6	0.56	1.02	-55	+170	

* The upper limit is the maximum internal hot-spot temperature resulting from the combination of the ambient temperature and heating due to current. Contact IE DEBTRCH for more detail of specific products to meet your sealed electrical connection requirements.

CONTACTS & TOOLING PART NUMBERS

Contact Size	Socket	Pin	PCB Socket	PCB Pin	Filler Plug	Ins/Ext Tool	Crimp Tool	Socket Positioner	Pin Positioner
24	605704	605705-31	610292	6161-31	600300-24	609557	WZ52072-01	605840	605859

ORDERING INFORMATION

ASX

Range Ref:

- 0 = 2 Hole Flange Receptacle
- 1 = In-line Receptacle
- 2 = 2 Hole Flange Receptacle with PCB contacts
- 6 = Free Plug

Style:

- 0 = 2 Hole Flange Receptacle
- 1 = In-line Receptacle
- 2 = 2 Hole Flange Receptacle with PCB contacts
- 6 = Free Plug

Shell Size:

05

Contact Arrangement:

05

Insert Type:

- P = Pin
- S = Socket

Shell Keyways:

- N = Red (standard)
- A = Yellow
- B = Blue
- C = Orange
- D = Green
- E = Grey
- U = Violet
- (U = Universal for test harnesses) (Plug type 6 only)

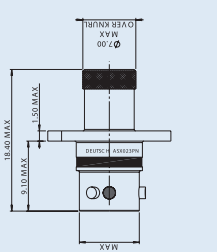
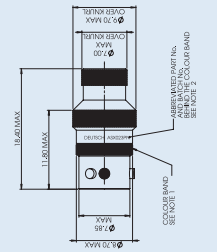
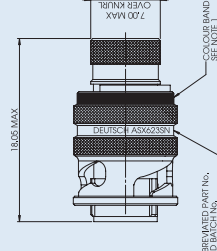
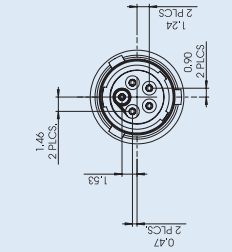
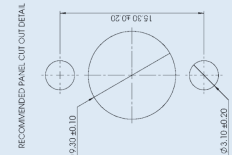
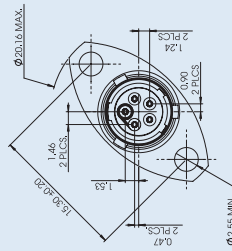
Modification Code:

ACCESSORIES PART NUMBERS

Part Number	Description
AW095-2	Gasket
GW-2	GW-2

Boot Information

Part Number	Boot Information
AW095-2	90 degree
GW-2	23W60
AW095-2	T102-4-G
GW-2	T102-4-G



All dimensions are in mm unless otherwise stated.

AS Micro Xtra^{LITE} HE - 6 Way Connector

Ultra Compact Design (Size 2 shell)

- Minimum space envelope
- 6 Size #24 contacts
- PCB option
- Smaller and lighter than AS Ultra^{LITE} (ASU) series connectors

Easy Installation

- Positive locking coupling mechanism
- Suitable for blind mating
- Scoop proof interface
- Boot termination feature

Built to Withstand Harsh Environments

- Conductive black zinc finish
- Interfacial wire sealing
- Gold-plated crimp contacts
- Bonded and sealed insert to prevent moisture ingress



GENERAL SPECIFICATION

No. of Ways	Contact Size	Max. Current (amps)	Durability (cycles of engagement & disengagement)	Dielectric Withstanding Voltage (kVAC)	No. of Keyway Orientations		Wire Sealing (mm)		Temperature (°C)	
					Min	Max	Min	Max	Min	Max
6	24	3	500	1000	0.56	1.02	-55	+170		

* The upper limit is the maximum internal hot-spot temperature resulting from the combination of the ambient temperature and heating due to current.
 ** Current leakage less than 2 mA/lamps at 1VAC

CONTACTS & TOOLING PART NUMBERS

Contact Size	Socket	Pin	PCB Socket	PCB Pin	Filler Plug	Ins/Ext Tool	Crimp Tool	Socket Positioner	Pin Positioner
24	605704	605705-38	617292	616131	600300-24	603837	M25201/2-01	603840	603839

ORDERING INFORMATION

ASX

Range Ref:

- 0 = 2 Hole Flange Receptacle
- 1 = In-line Receptacle
- 2 = 2 Hole Flange Receptacle with PCB contacts
- 6 = Free Plug

Shell Size:

06

Contact Arrangement:

Insert Type:

- P = Pin
- S = Socket

Shell Keyways:

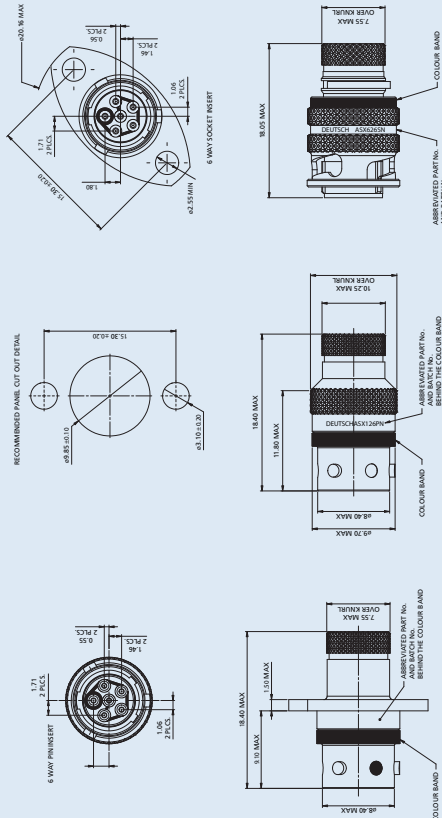
- N = Red (standard)
- A = Yellow
- B = Blue
- C = Orange
- D = Green
- E = Grey
- U = Violet
- (U = Universal for test harnesses) (Plug type 6 only)

Modification Code:

ACCESSORIES PART NUMBERS

Part Number	
Mit Pike	Gasket
AM956-2	GV2

Boot Information	
Straight	90 degree
203W501/25-602	223W601
1107-4-G	1102-4-G



All dimensions are in mm unless otherwise stated.

AS Ultra^{LITE} HE & AS Micro Ultra^{LITE} HE (ASU) Series Connectors

AS Micro Ultra^{LITE} HE (3-Way)



AS Ultra^{LITE} HE (5-Way)



Unique DEUTSCH designed product

- Smaller alternative to ASL range
- Cable accommodation 24-30 AWG (5 way), 22-28 AWG (3 way)
- 17% smaller coupling ring than ASL
- 30% lighter than ASL (mated pair)

2 Different Contact Options

- 5x AWG24 contacts
- 3x AWG22 contacts

Built to Withstand Harsh Environments

- Conductive black zinc finish
- Interfacial wire sealing
- Bonded and sealed insert to prevent moisture ingress

GENERAL SPECIFICATION

No. of Ways	Contact Size	Shell Size	Max. Current (amps)	Durability (cycles of engagement & disengagement)	Dielectric Withstanding Voltage (kV)	No. of Keyway Orientations		Wire Sealing (mm)		Temperature (°C)	
						Min	Max	Min	Max	Min	Max
3	22	3	5	500	1500	0.76	1.37	0.56	102	-55	+170
5	24	3	3	500	1000	0.76	1.37	0.56	102	-55	+170

* The upper limit is the maximum internal hot-spot temperature resulting from the combination of the ambient temperature and heating due to current.
 ** Current leakage less than 2mA @ 100V at 100°C

CONTACTS & TOOLING PART NUMBERS

Contact Size	Socket	Pin	PCB Socket	PCB Pin	Filler Plug	Ins./Ext. Tool	Crimp Tool	Socket Positioner	Pin Positioner
22	604984	604946-31	605681	605679-31	600300-22	M81969/14-01	M2220/2-01	605464	605463
24	605704	606705-31	605902	605900-31	600500-24	605837		605840	605839

ORDERING INFORMATION

Range Ref: ASU

Style:

- 0 = 2 Hole Flange Receptacle
- 1 = Inline Receptacle
- 2 = 2 Hole Flange Receptacle with PCB contacts
- 6 = Free Plug

Shell Size:

Contact Arrangement:

Insert Type:

- P = Pin
- S = Socket

Shell Keyways:

- N = Red (standard)
- A = Yellow
- B = Blue
- C = Orange
- D = Green
- E = Grey
- U = Violet

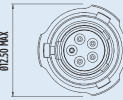
Modification Code: (Plug type 6 only)

ACCESSORIES PART NUMBERS

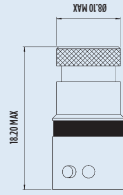
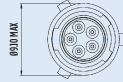
Receptacle	Plug	Nut Plate	Gasket
605684	605687	AM196-3	GT-3

Receptacle	Plug	Boot Information
Reychem Hellerarm	0037-4-G	Straight 90 degree 22AWG22-25-603 1182-4-G

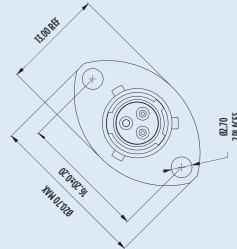
PLUG - TYPE 6



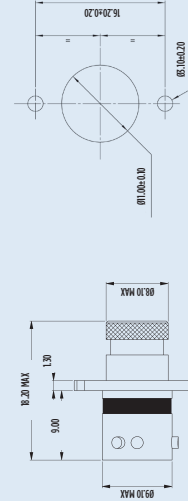
INLINE RECEPTACLE - TYPE 1



RECEPTACLE - TYPE 0



PANEL CUT-OUT DETAIL



All dimensions are in mm unless otherwise stated.

AS MicroLITE HE (ASL) Series Connectors

Compact Design (Size 6 shell)

- Designed for sensor applications
- 5 Size #23 contacts
- PCB option

Easy Installation

- Positive locking coupling mechanism
- Suitable for blind mating
- Scoop proof interface
- Boot termination feature

Built to Withstand Harsh Environments

- Conductive black zinc finish
- Interfacial wire sealing
- Bonded and sealed insert to prevent moisture ingress

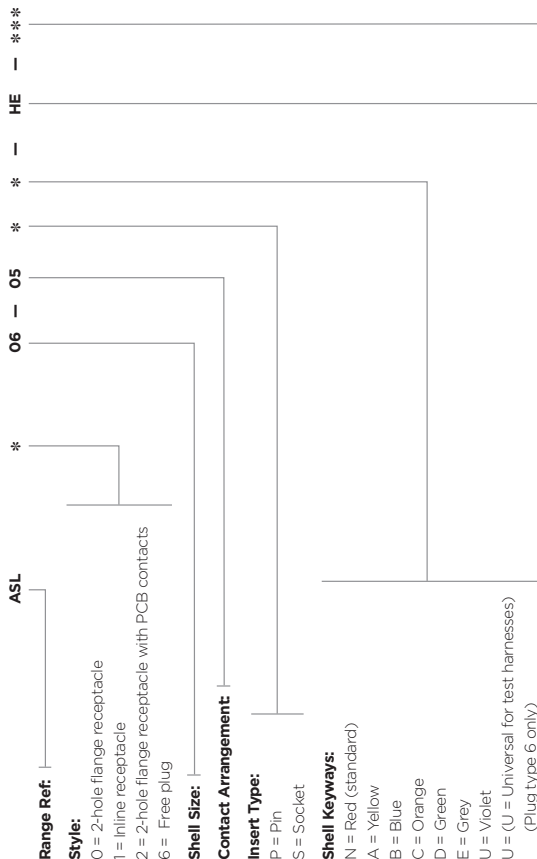
No. of Ways	Contact Shell Size	Max. Current (amps)	Durability (cycles of engagement & disengagement)	Dielectric Withstanding Voltage (kV)	No. of Keyway Orientations	Wire Sealing (mm)		Temperature (°C)	
						Min	Max	Min	Max
5	Z3	6	3	1000	6	0.60	1.37	-55	+170

* The upper limit is the maximum internal hot-spot temperature resulting from the combination of the ambient temperature and heating due to current.
 ** Current leakage less than 2 millamps at (VAC)

CONTACTS & TOOLING PART NUMBERS

Contact Size	Socket	Pin	PCB Socket	PCB Pin	Filler Plug	Ins/Ext Tool	Crimp Tool	Socket Positioner	Pin Positioner
Z3	604935	604927-3I	604992-HE	604950-3I	600300-Z2	M819169/74-01	M22520/2-01	604973	604972

ORDERING INFORMATION



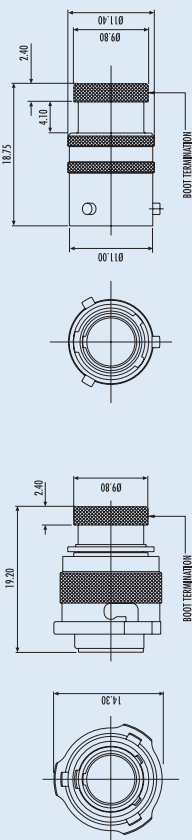
ACCESSORIES PART NUMBERS

Receptacle	Plug	Nut Plate	Gasket	Boot Information									
604029	604027	ATM95-6	GT-6										
				<table border="1"> <tr> <th>Style</th> <th>Part Number</th> <th>Part Number</th> </tr> <tr> <td>Straight</td> <td>204WZ21</td> <td>224WZ21</td> </tr> <tr> <td>90 degree</td> <td>103V-4-G</td> <td>118-4-G</td> </tr> </table>	Style	Part Number	Part Number	Straight	204WZ21	224WZ21	90 degree	103V-4-G	118-4-G
Style	Part Number	Part Number											
Straight	204WZ21	224WZ21											
90 degree	103V-4-G	118-4-G											
Raychem Hellermann													



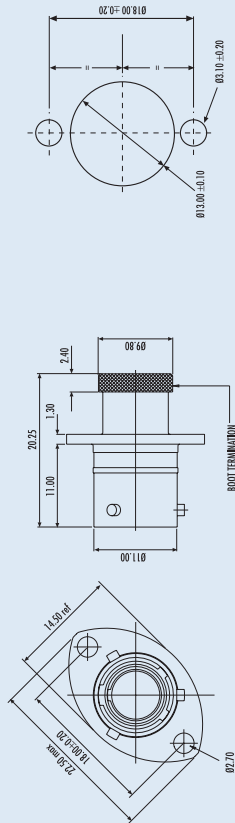
PLUG - TYPE 6

INLINE RECEPTACLE - TYPE 1



RECEPTACLE - TYPE 0

PANEL CUT-OUT DETAIL



All dimensions are in mm unless otherwise stated.

AS Rally Micro (ASR) Series Connectors

Compact Design (Size 6 shell)

- Specialised Coupling ring for poor grip locations
- 5 Size #23 contacts

Easy Installation

- Positive locking coupling mechanism
- Suitable for blind mating
- Scoop proof interface
- Boot termination feature

Built to Withstand Harsh Environments

- Conductive black zinc finish
- Interfacial wire sealing
- Bonded and sealed insert to prevent moisture ingress



GENERAL SPECIFICATION

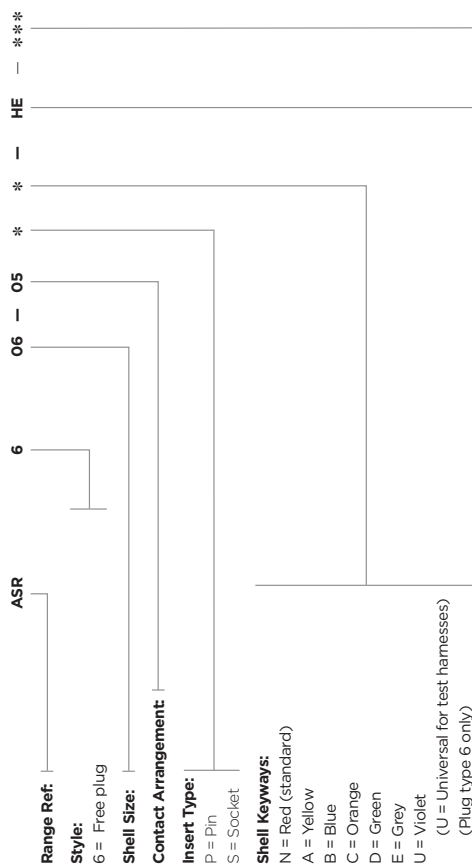
No. of Wires	Contact Size	Shell Size	Max. Current (amps)	Durability (cycles of engagement & disengagement)	Dielectric Withstanding Voltage (kV)	Wire Sealing (mm)		Temperature (°C)	
						Min	Max	Min	Max
5	Z3	6	3	500	1000	0.60	1.37	-55	+170

* The upper limit is the maximum internal hot-spot temperature resulting from the combination of the ambient temperature and heating due to current.
 ** Current leakage less than 2 millamps at (VAC)

CONTACTS & TOOLING PART NUMBERS

Contact Size	Socket	Pin	Filler Plug	Ins/Ext Tool	Crimp Tool	Socket Positioner	Pin Positioner
Z3	604935	604927-31	600300-Z2	M819/69/14-01	MZ520/7-01	604973	604972

ORDERING INFORMATION



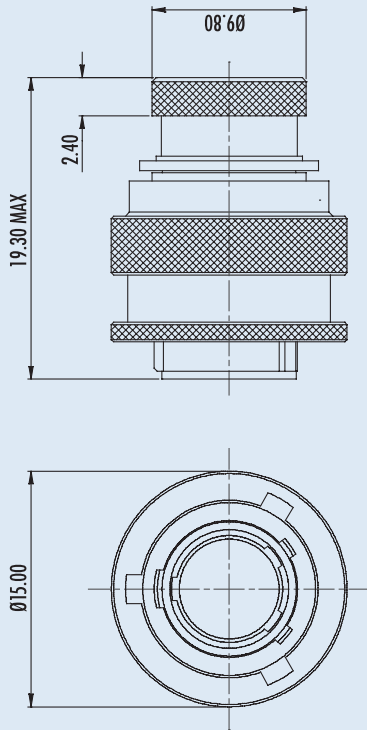
Harsh Environment: HE
Modification Code: ASR - Enhanced Plug, for mating Receptacles see ASI, page 15

ACCESSORIES PART NUMBERS

Part	Part Number
Pre Cap	604027

Boot Information	
Straight	90 degree
Raychem	Z24N221
HELLMANN	1030-4-G
	181-4-G

PLUG - TYPE 6



All dimensions are in mm unless otherwise stated.

AS Composite (ASC) Series Connectors

Extremely resistant to vibration

- Military approved rugged thermoplastic housing

Unique Installation Options

- Bondable with suitable adhesive in different configurations
- Cable-tie slot for security and mounting inline connections designed to fit Thomas & Betts part no. TY24 or equivalent
- Close stacking possible with locating sides and bottom

GENERAL SPECIFICATION

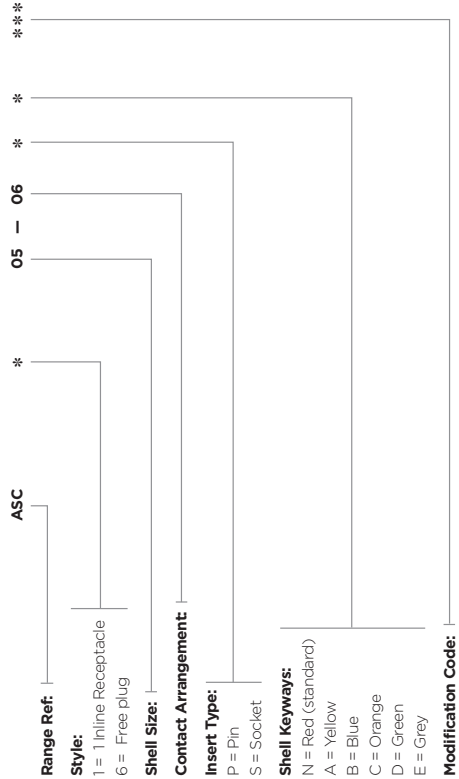
Contact Size	Shell Size	Max. Current (amps)	Durability (cycles of engagement & disengagement)	Dielectric Withstanding Voltage (VAC)	No. of Keyway Orientations		Wire Sealing (mm)		Temperature (°C)	
					Min	Max	Min	Max		
22	6	5	300	1500	6	6	0.76	1.37	-55	+170

* The upper limit is the maximum internal hot-spot temperature resulting from the combination of the ambient temperature and heating due to current.
 ** Current leakage less than 2 milliamperes at VAC.

CONTACTS & TOOLING PART NUMBERS

Socket	Pin	Filler Plug	Ins/Ext Tool	Crimp Tool	Socket Positioner	Pin Positioner
604954	604946-31	603300-22	M89169/14-01	M22320/2-01	605464	605463

ORDERING INFORMATION



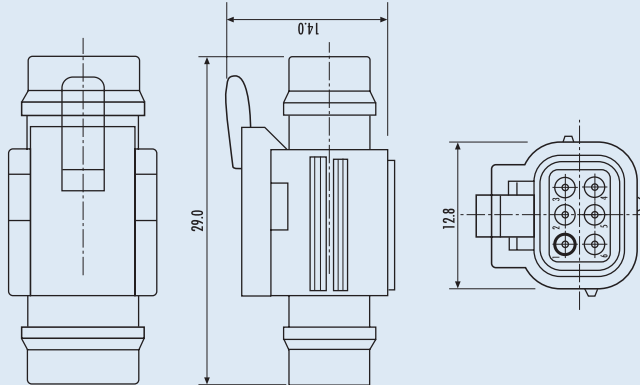
Part Numbers: Receptacle: AS005-063N Plug: AS005-063N

Please note: Plug only available in pin arrangement. Receptacle only available in socket arrangement.

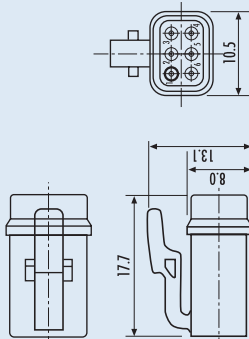
ACCESSORIES PART NUMBERS

Accessories	Boot Information	
	Straight	90 degree
Raychem	204WZ21	Z24WZ21
Hellermann	103X-4-G	181-H-G

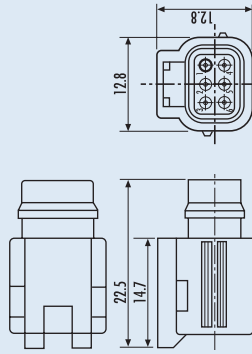
MATED PAIR



PLUG - TYPE 6



RECEPTACLE - TYPE 1



All dimensions are in mm unless otherwise stated.

AS Mini Series Connectors

- Size 7 shell
Smaller option to Mil size 8
- 2 planform options
3 or 6 contact options
- Integral screen termination
Ideal for braided cable installations
- Cable accommodation 20, 22, 24 and 26 AWG
- Offers size 8 insert arrangement in smaller shell



GENERAL SPECIFICATION

Contact Size	Shell Size	Max. Current (amps)	Durability (cycles of engagement & disengagement)	Dielectric Withstanding Voltage (kVAC)	Wire Sealing (mm)		Temperature (°C)	
					Min	Max	Min	Max
22	7	5	500	1500	0.76	1.37	-55	+170
20		7.5		1800	1.02	2.11		

* The upper limit is the maximum internal hot-spot temperature resulting from the combination of the ambient temperature and heating due to current.
 ** Current leakage less than 7 milamps at 10kV

CONTACTS & TOOLING PART NUMBERS

Contact Size	Socket	Pin	Filler Plug	Ins/Ext Tool	Crimp Tool	Socket Positioner	Pin Positioner
22	604887	3894I-22	600300-22	M81969/14-01	M22520/2-01	605000	M22520/2-09
20	686201-2028	3894I-20	600300-20	M81969/14-10		M22520/2-10	M22520/2-10

ORDERING INFORMATION

Range Ref: AS

Style:
 0 = 2-hole Receptacle
 1 = 1 inline Receptacle
 6 = Free plug

Shell Size: 07

Contact Arrangement: 07 - * * * * *
 35, 98

Insert Type:
 P = Pin
 S = Socket

Shell Keyways:
 N = Red (standard)
 A = Yellow
 B = Blue

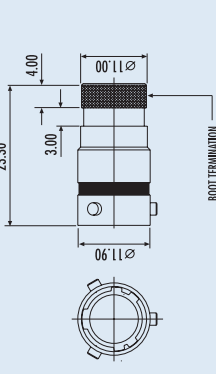
Modification Code: * * * *

ACCESSORIES PART NUMBERS

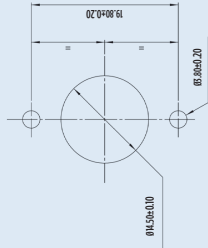
Pro Cap	Plug	Nut Plate	Gasket
AS9-07	AS8-07	ATM396-7	GH7

Boot Information	
Straight	90 degree
Raychem	Z22M21
Hellermann	152-42-G
	1152-4-G

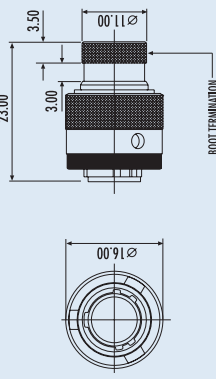
INLINE RECEPTACLE - TYPE 1



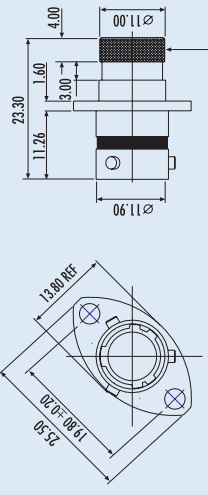
PANEL CUT-OUT DETAIL



PLUG - TYPE 6



RECEPTACLE - TYPE 0



INSERT ARRANGEMENTS



07-98
 Size 7 3/4Z
 07-35
 Size 7 6/4Z
 All dimensions are in mm unless otherwise stated.



Large application choices

- Filter, Hermetic & Fibre Optic options available
Shell sizes 8 - 24
- Interchangeable with existing LN29729 (Mil-C 38999 Series 1.5) and Pan 6433-2 style connectors
- High density arrangements

Built to Withstand Harsh Environments

- Conductive black zinc finish
- Interfacial wire sealing
- Bonded and sealed insert to prevent moisture ingress

GENERAL SPECIFICATION

Contact Size	Shell Size	Max. Current (amps)	Durability (cycles of engagement & disengagement)	No. of Keyway Orientations	Wire Sealing (mm)			Temperature (°C)*	
					Min	Max	Min	Max	
22	8 to 24 see below	5 7.5 20	500	5	0.75	1.37	-55	+175	

*The upper limit is the maximum internal hot-spot temperature resulting from the combination of the ambient temperature and heating due to current.

Shell Size	Contact Arrangement	Number of Contacts			Rating**
		Size 22D	Size 20	Size 16	
08	-09	6	3	1	M
08	-35	6	3	1	M
10	-09	13	6	1	M
10	-35	13	6	1	M
10	-02		2	2	M
10	-05		3	3	M
12	-04		4	4	M
12	-09		10	10	M
12	-35		22	8	M
14	-09		19	19	M
14	-35		37	6	M
16	-06		26	8	M
16	-35		55	29	M

**Ratings M8 define Dielectric Withstand Voltage ratings as follows:
I = 1800 volts rms, M = 1500 volts rms, current leakage less than 2 milliamperes.

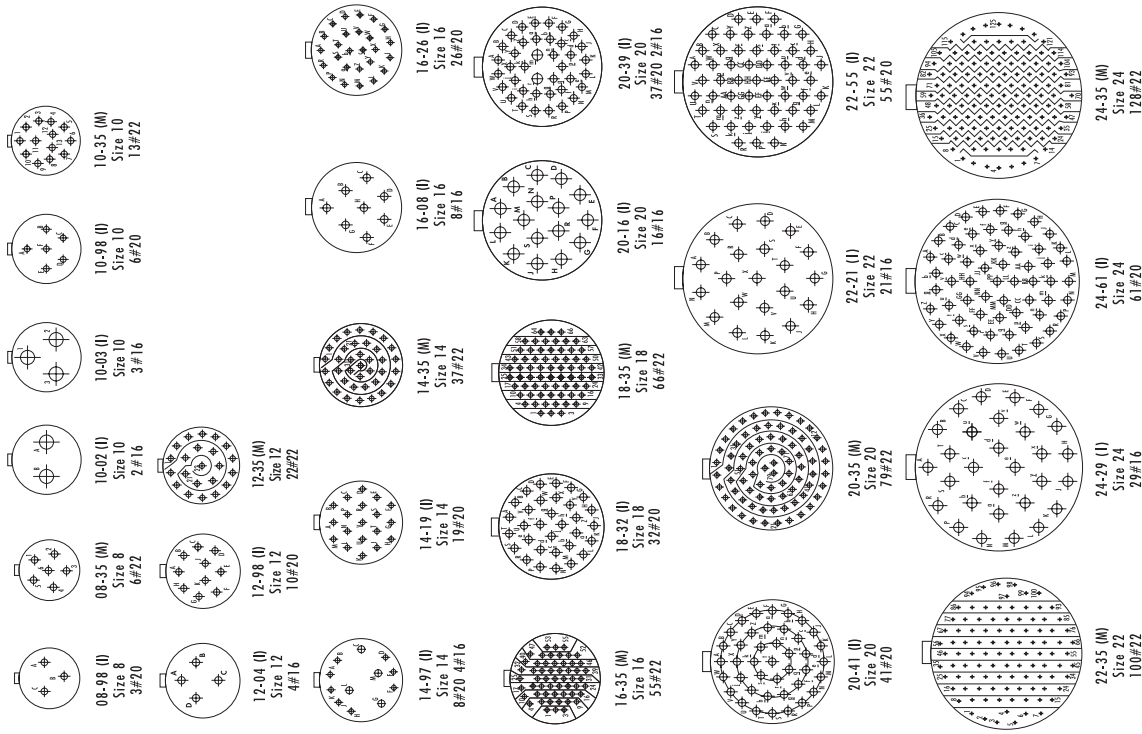
Please note: The contact/insert arrangements shown above are standard layouts. Other combinations of shell sizes and insert arrangements may be available. For details contact the sales office.

CONTACTS & TOOLING PART NUMBERS

Contact Size	Socket	Pin	Filter Plug	Ins/Ekt Tool	Crimp Tool	Socket Positioner	Pin Positioner
22	3894-22	3894-22	600500-22	M81969/14-01	M2250/2-01	M2520/2-01	M2520/2-09
20	3894-20	3894-20	600500-20	M81969/14-30	M2250/2-01	M2520/2-01	M2520/2-30
16	3894-16	3894-16	600500-16	M81969/14-05	M2250/1-01	M2520/1-04	M2520/1-04

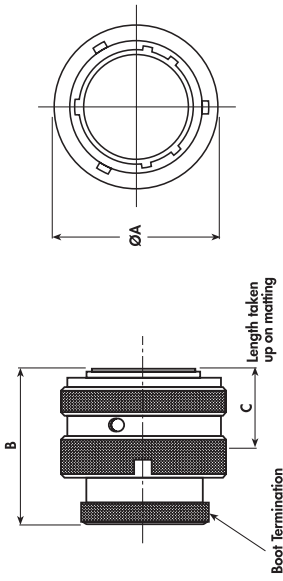
Please note: PCB versions are ordered with AS2 prefixes and come with contacts.

AS CONTACT / INSERT ARRANGEMENTS



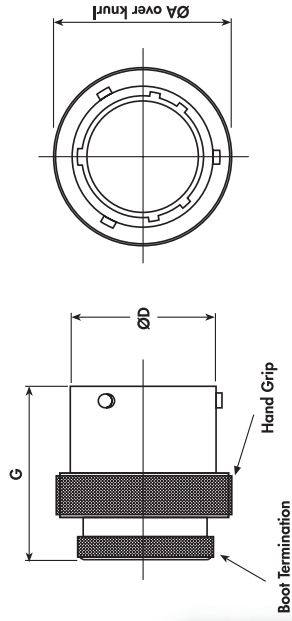
Ratings M8 define Dielectric Withstand Voltage ratings as follows: I = 1800 volts rms, M = 1500 volts rms, current leakage less than 2 milliamperes.

PLUG - TYPE 6



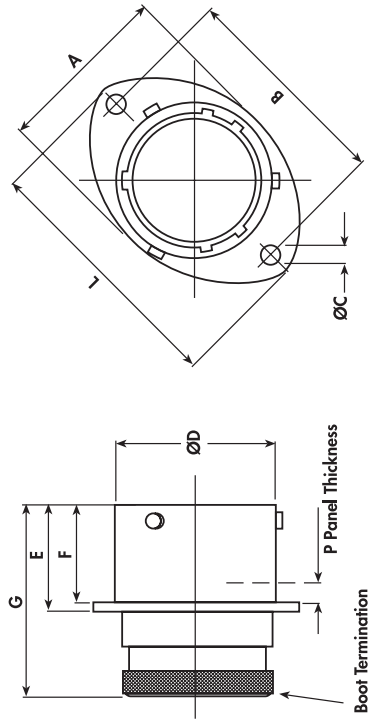
Shell Size	A MAX	B MAX	C MAX
08	17.70		
10	20.80		
12	25.20		
14	28.40		
16	31.50	33.50	15.00
18	34.80		
20	38.20		
22	41.30		
24	44.60		

INLINE RECEPTACLE - TYPE 1



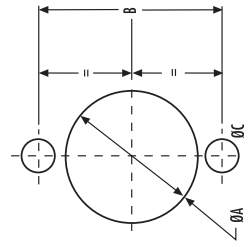
Shell Size	A MAX	D	G MAX
08	17.70	12.00	
10	20.80	15.00	
12	25.20	19.05	
14	28.40	22.22	
16	31.50	25.40	33.50
18	34.80	28.57	
20	38.20	31.75	
22	41.30	34.92	
24	44.60	38.10	

RECEPTACLE - TYPE 0



Shell Size	A REF	B ±0.2	C +0.1 -0	D +0 -0.3	E +0.5 -0	F +0 -0.3	G MAX	L MAX	P MAX
08	16.50	21.35		12.00				27.20	
10	19.50	25.90		15.00				32.00	
12	24.00	29.10		19.05				35.20	
14	27.00	32.50	3.20	22.22		16.05	33.50	38.40	3.00
16	30.30	34.80		25.40	17.21			41.00	
18	33.70	38.20		28.57				44.70	
20	37.00	41.60		31.75		15.29		47.90	
22	40.00	44.95		34.92				51.00	
24	43.30	49.35	3.70	38.10				53.80	2.26

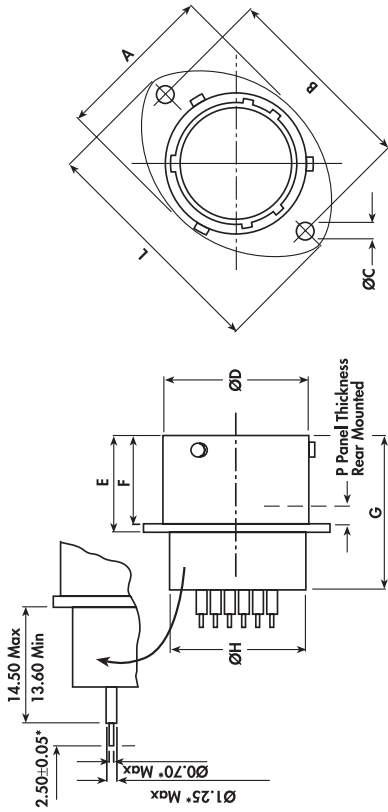
PANEL CUT-OUT DETAIL



Shell Size	A	B	C
08	14.50	21.40	+0.20
10	17.40	25.90	
12	21.90	29.10	
14	25.00	32.50	3.6
16	28.20	34.80	
18	31.40	38.20	
20	34.60	41.60	
22	37.80	44.90	
24	41.00	49.30	4.10

All dimensions are in mm unless otherwise stated.

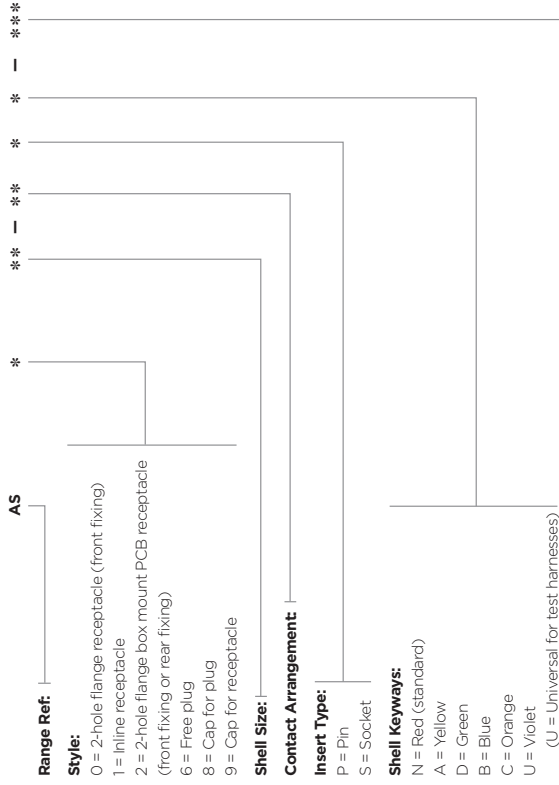
PCB BOX MOUNTING RECEPTACLE – TYPE 2



*Dimensions for 20 and 24 contacts shown are for standard parts. Other PCB contacts are available.

Shell Size	A REF	B +0.2	C -0.1 -0	D +0 -0.5	E +0.5 -0	F +0 -0.5	G MAX	H MAX	I MAX	J MAX	K MAX	L MAX	M MAX	N MAX	O MAX	P MAX
08	16.50	21.40		12.00				11.10	27.20			27.20				
10	19.50	25.90		15.00				14.27	32.00			32.00				
12	24.00	29.10		19.05		16.05		17.44	35.20			35.20				
14	27.00	32.50		22.22				20.60	38.40			38.40				3.00
16	30.30	34.80	3.2	25.40	11.71		27.65	25.77	41.00			41.00				
18	33.70	38.20		28.57				26.94	44.70			44.70				
20	37.00	41.60		31.75				30.11	47.90			47.90				
22	40.00	44.95		34.92		15.29		33.29	51.10			51.10				
24	43.30	49.35	3.7	38.10				36.46	55.80			55.80				2.25

ORDERING INFORMATION



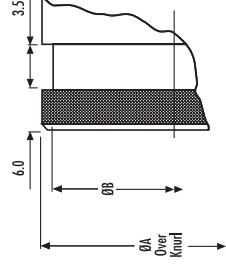
Modification Code:
AS

Please note: The size 8 shell is only available in keyways A, D and N.

ACCESSORIES PART NUMBERS

Shell Size	Nut Plate	Gasket
08	AMS96-8	GV-08
10	AMS96-10	GV-10
12	AMS96-12	GV-12
14	AMS96-14	GV-14
16	AMS96-16	GV-16
18	AMS96-18	GV-18
20	AMS96-20	GV-20
22	AMS96-22	GV-22
24	AMS96-24	GV-24

BOOT TERMINATION DETAIL



Shell Size	A ± 0.10	B ± 0.05
08	11.20	10.00
10	14.22	12.95
12	17.39	16.15
14	20.55	19.15
16	23.72	23.35
18	26.89	25.35
20	30.06	28.50
22	33.24	31.70
24	36.41	34.85

All dimensions are in mm unless otherwise stated.

AS Double Density (ASDD) Series Connectors

Next Generation Connector - high density and high performance 5 shell sizes

- Allows for a saving of 2 shell sizes relative to regular Autosport platforms
- Very lightweight
- Almost double the number of contacts compared with the regular Autosport range equivalent shell size
- Integral screen

Built to Withstand Harsh Environments

- Conductive black zinc finish
- Interfacial wire sealing
- Bonded and sealed insert to prevent moisture ingress



GENERAL SPECIFICATION

Connector	Contact Size	Shell Size	Max. Current (amps)	Durability (cycles of engagement & disengagement)	Dielectric Withstanding Voltage (VAC)	No. of Keyway Orientations		Wire Sealing (mm)		Temperature (°C)	
						Min	Max	Min	Max		
9-Way	24	6	3	500	750	6	0.56	1.02	-55	+170	
8-11		8									
10-23		10									
12-41		12									
14-64	14					6					

* The upper limit is the maximum internal hot-spot temperature resulting from the combination of the ambient temperature and heating due to current.
 ** Current leakage less than 2 milliamperes at VAC

CONTACTS & TOOLING PART NUMBERS

Connector	Socket	Pin	PCB Socket	PCB Pin	Ins/Ext Tool	Socket Positioner	Pin Positioner
9-Way	605704	605705-31	610008	610006-31	605837 PCB versions are ordered with AS2 prefiles and come with contacts.	605840	605839
8-11							
10-23	605721	605719-31				600287	600286
12-41							
14-64							

ORDERING INFORMATION

Range Ref: ASDD

Style:

- 0 = 2-hole flange receptacle
- 1 = In-line receptacle
- 2 = 2 hole flange receptacle with PCB contacts
- 6 = Free plug

Shell Size:

- 06, 08, 10, 12, 14

Contact Arrangement:

- 09, 11, 23, 41, 64

Insert Type:

- P = Pin
- S = Socket

Shell Keyways:

- N = Red (standard)
- A = Yellow
- D = Green
- B = Blue
- C = Orange
- E = Grey
- U = Violet

Modification Code:

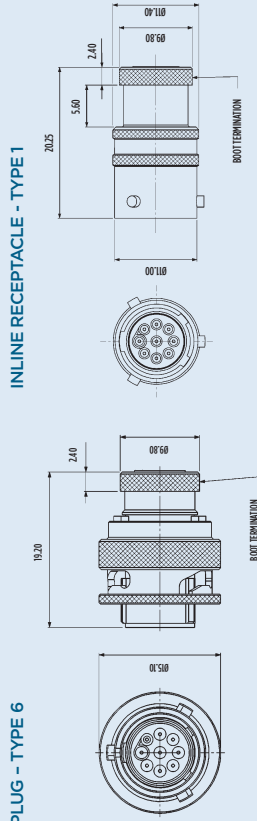
Please note: The size 8 shell is only available in keyways A, D and N and only the 9 way is available as Keyway E.

ACCESSORIES PART NUMBERS

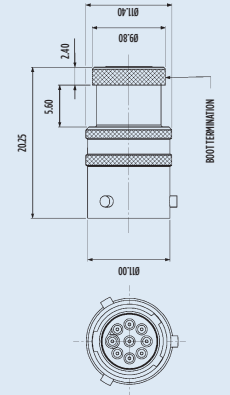
For information on boots and nut plates please refer to AS series on page 46-47 or contact the sales office for further information.

With the exception of the 9-Way, the ASDD range of connectors uses standard AS metalwork, for the individual dimensions please refer to AS Series section on page 21 & 25.

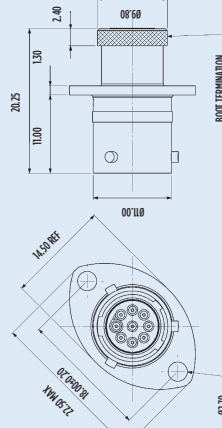
9-WAY ONLY PLUG - TYPE 6



INLINE RECEPTACLE - TYPE 1



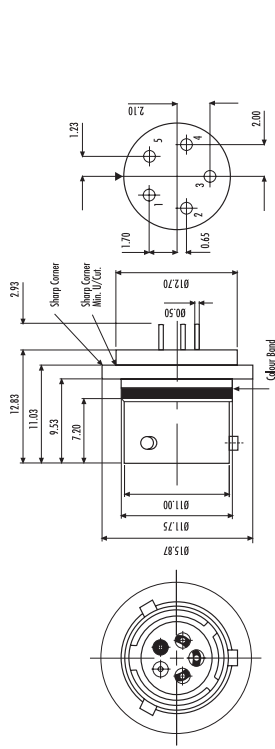
RECEPTACLE - TYPE 0



All dimensions are in mm unless otherwise stated.

**Hermetic Weld mount connector
Intermateable with AS Micro
and ASL**

- Filtered Hermetic option also available
- High Performance Materials**
 - Stainless Steel (316) for ease of mounting and corrosion performance
 - Titanium versions for light weight applications also available
 - Glass seal can withstand pressure differentials of 1000 PSI without loss of electrical performance or fluid leakage



GENERAL SPECIFICATION

Contact Site	Shell Size	Max. Current (amps)	Durability (cycles of engagement & disengagement)	Dielectric Withstanding Voltage (WV)**	No. of Keyway Orientations	Temp (°C)		Materials		Finish
						Min	Max	Shell	Contacts	
Z5	6	3	500	1000	5	-45	+200	Stainless Steel (316)***	Nickel Iron	Electro-polished Gold Plated

* The upper limit is the maximum internal hot-spot temperature resulting from the combination of the ambient temperature and heating due to current.
 ** Current leakage less than 2 milliamperes at (WV)
 *** Titanium Shell also available

ORDERING INFORMATION

AS Micro HE Hermetic Receptacle: AS 4H 06 - 05 P N - HE

AS Micro HE Plug: ASL 606 05S * - HE

Shell Orientation: N = Red (standard)

All dimensions are in mm unless otherwise stated.

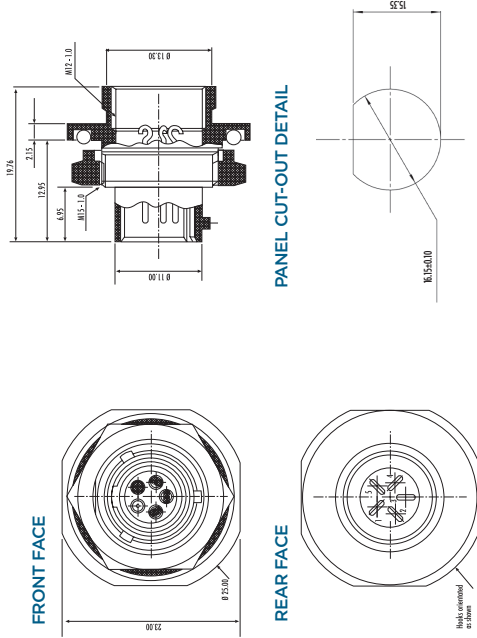
Unique product for sensor and fuel cell use

- Jam-nut fixing
- Enlarged backshell for easier contact soldering
- Fuel Immersible specification O-ring for enhanced fluid resistance

High Performance Materials

- Glass seal can withstand pressure differentials of 1000 PSI without loss of electrical performance or fluid leakage

Fully intermateable with AS Micro HE Connector and Micro_{LINE} Connector



PANEL CUT-OUT DETAIL

GENERAL SPECIFICATION

Contact Site	Shell Size	Max. Current (amps)	Durability (cycles of engagement & disengagement)	Dielectric Withstanding Voltage (WV)**	No. of Keyway Orientations	Temperature (°C)	
						Min	Max
Z5	6	3	500	1000	1	-45	+200

* The upper limit is the maximum internal hot-spot temperature resulting from the combination of the ambient temperature and heating due to current.
 ** Current leakage less than 2 milliamperes at (WV)

ORDERING INFORMATION

Part No. AS7H06 - 05 PN-HE
 All dimensions are in mm unless otherwise stated.

AS Hermetic Fuel Tank Series Connectors

Range of connectors designed for fuel cell walls

Selection of contact arrangements to accommodate pumps and sensors

High Performance Materials

- Fuel immersible specification O-ring for enhanced fluid resistance
- Integral potting cup, rear accessory thread and external boot termination feature
- Glass seal can withstand pressure differentials of 1000 PSI without loss of electrical performance or fluid leakage

Contact Size		Max. Current (amps)	Sealing	Pressure	Electrical	Materials		Finish	
22	20	5	1 x 10 ⁻⁶ cc/sec @ 15 PSI	1000 PSI typ.	0.5-5000 Volts @ 500 volt DC	Shell	Contacts	Shell	Contacts
20	7.5	Stainless Steel (316)				Nickel Iron	Electro-polished	Gold Plated	
16	20								

ORDERING INFORMATION

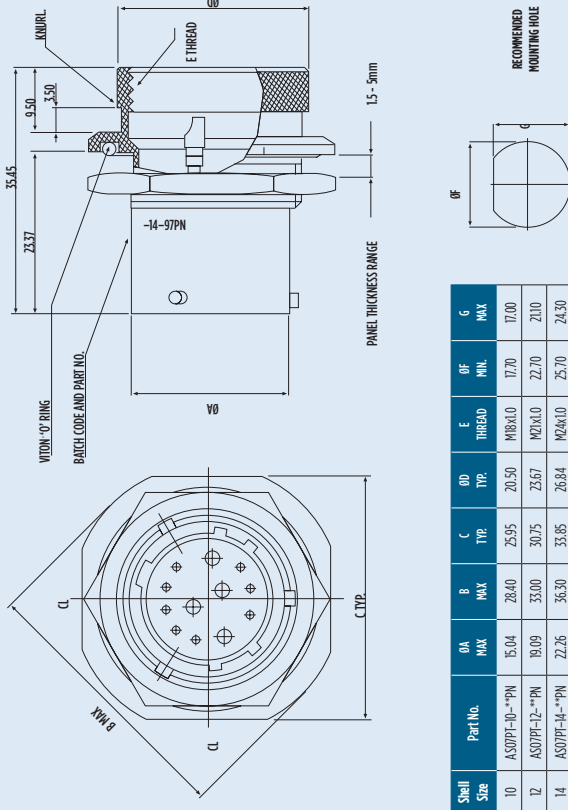
Basic P/N AS07PT - - * - * - P N

Planform
 10-35
 10-98
 12-04
 12-35
 12-98
 14-97

Pin Interface
 AS07PT - - * - * - P N

Shell Orientation
 AS07PT - - * - * - P N

Mating Free Plug (see page 22 - 23)
Part Nos:
 AS610-35SN
 AS610-98SN
 AS612-04SN
 AS612-98SN
 AS612-35SN
 AS614-97SN



All dimensions are in mm unless otherwise stated.

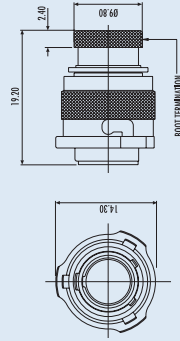
AS Micro^{LITE} HE Fuel Immersible Series Connectors

For in-tank connection applications

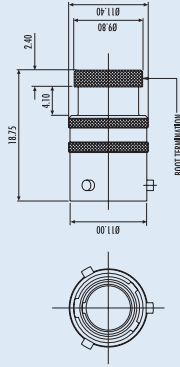
- Unique Deutsch designed fuel resistant elastomer insert
- Hermetic option with enlarged backshell for easy contact soldering and integrated potting cup available
- Cable accommodation 22, 24, 26 and 28 AWG
- Fully interchangeable with AS Micro HE and AS Micro^{LITE}



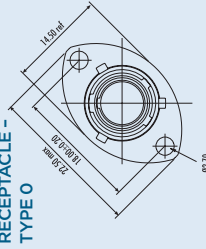
PLUG - TYPE 6



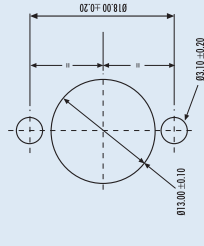
INLINE RECEPTACLE - TYPE 1



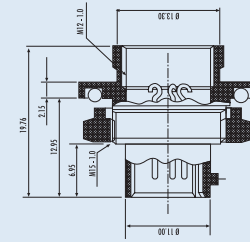
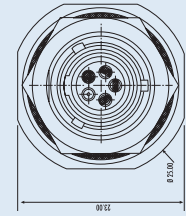
RECEPTACLE - TYPE O



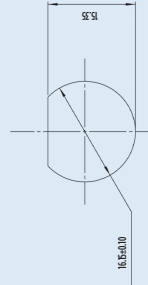
PANEL CUT-OUT DETAIL



HERMETIC RECEPTACLE



PANEL CUT-OUT DETAIL



GENERAL SPECIFICATION

Contact Size	Shell Size	Max. Current (amps)	Durability (cycles of engagement & disengagement)	Dielectric Withstanding Voltage (WV) **	No. of Keyway Orientations		Wire Sealing (mm)		Temperature (°C)	
					Min	Max	Min	Max	Min	Max
23	6	3	500	1000	6	0.60	1.37	-55	+170	

* The upper limit is the maximum internal hot-spot temperature resulting from the combination of the ambient temperature and heating due to current.
** Current leakage less than 2 milliamperes at (WV)

For other sizes and arrangements, please call our sales office on +44 (0) 1424 852722 or email autosport@te.com

CONTACTS & TOOLING PART NUMBERS

Socket	Pin	Filler Plug	Ins/Ext Tool	Crimp Tool	Socket Positioner	Pin Positioner
604935	604927-3i	600901-Z2	M09569/J4-0i	M23520/Z-0i	604973	604972

ORDERING INFORMATION

Range Ref: ASL (or AS for Hermetic) ASL * 06 - 05 * - HE - 952K

Style: 0 = 2 hole flanged receptacle
1 = Inline Receptacle
7H = Hermetic Receptacle
6 = Free Plug

Shell Size:

Contact Arrangement:

Insert Type: (AS7H pin insert only)

P = Pin

S = Socket

Shell Keyways: (AS7H N only)

N

A

B

Harsh Environment:

Modification Code:

ACCESSORIES PART NUMBERS

Pro Cap	Nut Plate	Gasket
Receptacle	Plug	
604029	604027	AT0956-6
		01-6

Boot Information	
Straight	90 degree
Raychem	220AIII
Hellemann	1108-4-G

All dimensions are in mm unless otherwise stated.

AS Heavy Duty (ASHD) Series Connectors

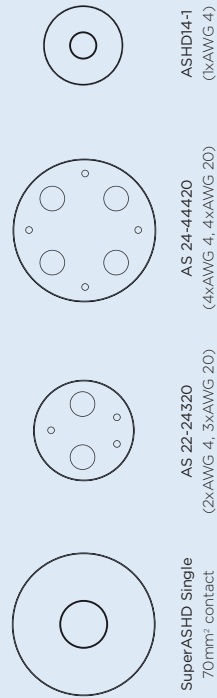
Autosport design for high current motorsport applications

- Early Break / Late Make on data contacts for safety
- Cable accommodation from 16mm² - 70mm²

- Positive locking coupling mechanism

High Performance Materials

- Environmentally sealed
- Thermal cycle tested
- Heavy duty rated
- Crimp type solid and Gold plated copper contacts



All dimensions are in mm unless otherwise stated.

CONTACTS & TOOLING PART NUMBERS

Contact Size	Socket	Pin	Filler Plug	Ins/Ext Tool	Crimp Tool	Socket Positioner	Pin Positioner
20	38942-20	38941-20	600500-20	M81959714-10	M22520/2-01	M22520/2-10	M22520/2-10

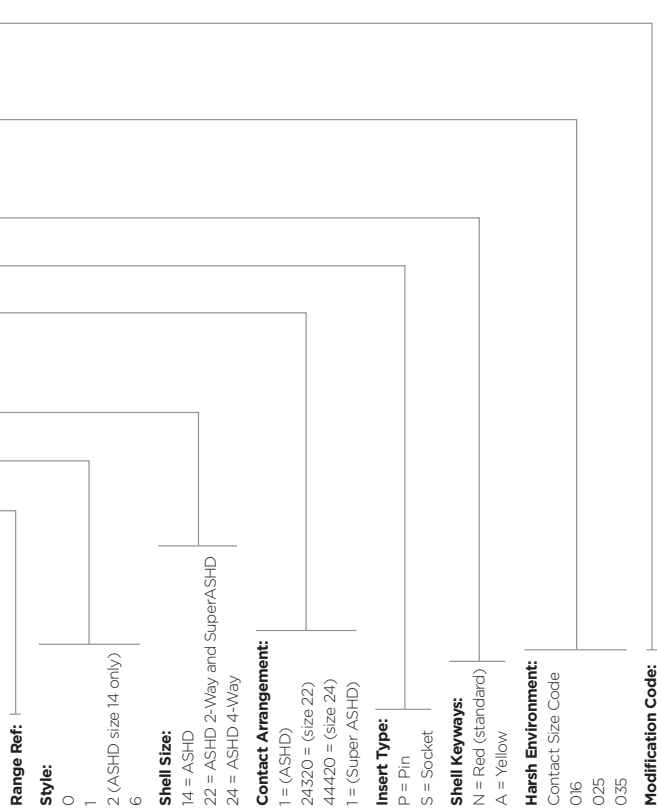
Please note PCB versions are ordered with AS2 prefixes and come with contacts.

Wire Size	Socket	Pin	Ext Tool	Crimp Tool	Jaws	Contact	Max. Current
16mm	61103-016	60574		60573	60574	20	7.5
25mm	61103-025	60560	60056-100		60575	4	200
35mm	61103-035	60575			60576	0	300

*For use with part numbers 65R002-24320H-904 and 65R06 22-24320H-004

Application Note: Due to potential high current, we would recommend that the product be suitably insulated with the appropriate materials.

ORDERING INFORMATION





Autosport designed co-axial cable solution

- Ultra compact and light weight design (Size 3 shell)
- Single co-axial contact and Gold-plated crimp contacts
- Positive locking coupling mechanism with 2 keyway orientations and Boot termination feature
- Designed for RG316 cable

GENERAL SPECIFICATION

Contact Size	Shell Size	Max. Current (amps)	Durability (cycles of engagement & disengagement)	Dielectric Withstanding Voltage (VAC)	No. of Keyway Orientations	Wire Sealing (mm)		Temperature (°C)	
						Min	Max	Min	Max
-	3	-	500	1000	2	-	-	-55	+175

*The upper limit is the maximum internal hot-spot temperature resulting from the combination of the ambient temperature and heating due to current.
 **Current leakage less than 2 milliamperes at (VAC)

All dimensions are in mm unless otherwise stated.

CONTACTS & TOOLING PART NUMBERS

Connector Type	Part Number
Plug	ASC003-TSN-050
Inline - receptacle	ASC003-RPN-050
Flanged - receptacle	ASC003-RPN-050

Portable Antenna



Portable Antenna

- Ultra compact and light weight design (Size 3 shell)
- Single co-axial contact
- Conductive black zinc finish
- Can be cut to length for optimised frequency (supplied with cut chart)

GENERAL SPECIFICATION

Contact Size	Shell Size	Max. Current (amps)	Durability (cycles of engagement & disengagement)	Dielectric Withstanding Voltage (VAC)	No. of Keyway Orientations	Wire Sealing (mm)		Temperature (°C)	
						Min	Max	Min	Max
-	3	-	-	-	2	-	-	-55	+175

*The upper limit is the maximum internal hot-spot temperature resulting from the combination of the ambient temperature and heating due to current.
 **Current leakage less than 2 milliamperes at (VAC)

Contact TE DEUTSCH for more detail of specific products to meet your sealed electrical connection requirements

All dimensions are in mm unless otherwise stated.

CONTACTS & TOOLING PART NUMBERS

Connector Type	Part Number
Plug (standard)	ASC003-TSN-050
Inline - receptacle	ASC003-RPN-050
Flanged - receptacle	ASC003-RPN-050
Portable antenna plug	ASC003-TSN-ANT

To complement our market leading range of harsh environment connectors, TE DEUTSCH Autosport team is able to offer special contacts for special situations.



New contact for ASDD & ASU 5 way connectors

- New "double crimp" fixing solution and unique crimping tool
- Only available for Gore® AWG30 wire (Performed better than industry standard AWG26 in comparable vibration conditions)
- No requirement to strip insulation
- Weight saving potential for data looms

GENERAL SPECIFICATION

Contact Size	Shell Size	Max. Current (amps)	Durability (cycles of engagement & disengagement)	Dielectric Withstanding Voltage (VAC)	No. of Keyway Orientations	Wire Sealing (mm)		Temperature (°C)	
						Min	Max	Min	Max
24	-	1	500	1000	-	-	-	-55	+175

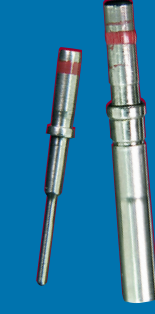
*The upper limit is the maximum internal hot-spot temperature resulting from the combination of the ambient temperature and heating due to current.
 **Current leakage less than 2 milliamperes at (VAC)

All dimensions are in mm unless otherwise stated.

CONTACTS & TOOLING PART NUMBERS

Contact Size	Socket	Pin	Gore Wire	Ins/Ekt Tool	Crimp Tool
24 ASDD	610795	6107731	610504	605807	610903
24 ASU	610798	610796-31	-	-	-

Special Contacts



Thermocouple Contacts

- Available in #22 for Autosport Range
- Available in #23 for MicroLite Series Connectors
- Engineered in Chromel and Alumel
- Designed exclusively for Deutsch connectors

GENERAL SPECIFICATION

Contact Size	Shell Size	Max. Current (amps)	Durability (cycles of engagement & disengagement)	Dielectric Withstanding Voltage (VAC)	No. of Keyway Orientations	Wire Sealing (mm)		Temperature (°C)	
						Min	Max	Min	Max
-	-	-	-	-	2	-	-	-55	+175

*The upper limit is the maximum internal hot-spot temperature resulting from the combination of the ambient temperature and heating due to current.
 **Current leakage less than 2 milliamperes at (VAC)

Contact TE DEUTSCH for more detail of specific products to meet your sealed electrical connection requirements

All dimensions are in mm unless otherwise stated.

THERMOCOUPLE #22 FOR AUTOSPORT RANGE

Description	Socket
Chromel pin	605346
Chromel socket	605347
Alumel pin	605348
Alumel socket	605349

THERMOCOUPLE #23 FOR MICRO-LITE

Description	Socket
Chromel pin	605378-CR
Chromel socket	605380-CR
Alumel pin	605378-AL
Alumel socket	605380-AL

CUSTOM MADE CONTACTS

In addition to Thermocouple contacts, we are able to engineer special solutions for different wire sizes on our regular contact range.

For more information and ordering details please call our sales office on **+44 (0) 1424 857088** or email **autosport@te.com**



ALUMINIUM WIRE

- Available for use with ASHD Series Connectors
- For aluminium wire AWG 4
- Aluminium wire and contact solution has been certified for flight use
- Other smaller contact sizes and wire options available

Autosport Specialist Solutions

ALUMINIUM WIRE GENERAL SPECIFICATION

Contact Size	Shell Size	Max. Current (amps)	Durability (cycles of engagement & disengagement)	Dielectric Withstanding Voltage (VAC)	No. of Keyway Orientations	Wire Sealing (mm)		Temperature (°C)	
						Min	Max	Min	Max
4	-	150	500	1500	-	-	-	-55	+175

Pin Socket	Mod Code
	610905
	610906

AS Flangeless Option



AS FLANGELESS

- Weight-saving alternative to ASI receptacle
- Available on AS shells 8 - 24
- Added knurl for easier coupling
- Factory modified change to save team's time
 - Available on shell sizes 8 - 24
 - Sample part number: AS410-35PN
 - (AS4 shell type denotes flangeless option)

For more information and ordering details please call our sales office on **+44 (0) 1424 857088** or email autosport@te.com



CLINCHNUT AS SERIES

- A replacement for nutplates
- Available for PCB and flange mounted versions
- Time-saving option
- Available across the range of AS connectors

CLINCHNUT AS SERIES GENERAL SPECIFICATION

Contact Size	Shell Size	Max. Current (amps)	Durability (cycles of engagement & disengagement)	Dielectric Withstanding Voltage (VAC)	No. of Keyway Orientations	Wire Sealing (mm)		Temperature (°C)	
						Min	Max	Min	Max
-	-	-	500	-	-	-	-	-55	+175

* The upper limit is the maximum internal hot-spot temperature resulting from the combination of the ambient temperature and heating due to current.
 ** Current leakage less than 2 milliamperes at VAC

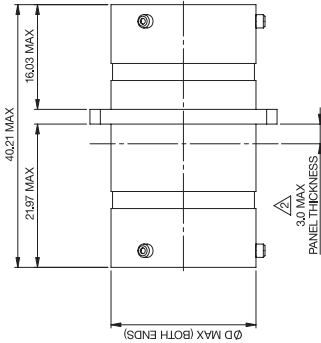
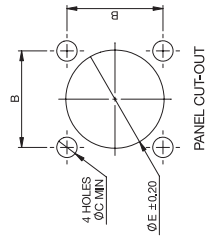
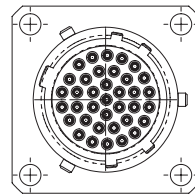
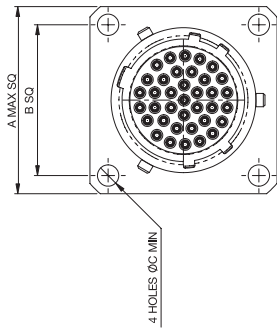
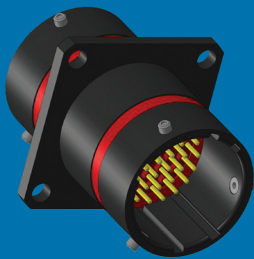
Mod Code	970M

For more information and ordering details please call our sales office on **+44 (0) 1424 857088** or email autosport@te.com



AS THROUGH BULKHEAD

- Military proven design
- Scoop-proof interface with shell to shell grounding
- Positive locking coupling mechanism
- Environmentally sealed to IP67
- Thermal cycle tested
- Fully interchangeable with AS range of products
- Gold plated crimp contacts
- 4 hole mounting style



PART NUMBERS	
AS3W-35PPN	Further options available, please contact sales offices for details.
AS3L-35PPN	
AS3H-35PPN	

Contact Deutsch for more detail of specific products to meet your sealed electrical connection requirements.

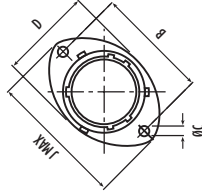
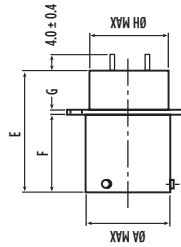
For more information and ordering details please call our sales office on **+44 (0) 1424 857088** or email autosport@te.com

AS Filter Solutions

With ever increasing systems and equipment sensitivity, unwanted noise created by ignition and communication systems on race cars can cause the 'Black Box' designer a real headache.

The Deutsch AS Filter connector range provides a high performance and space saving solution. By placing the filter elements in the 'skin' of the equipment, the RF window is minimised and RFI / EMI conducted interference is adequately attenuated.

In conjunction with the Autosport industry, two values have been determined for optimum performance, namely 5nF 'LC' and 10nF Piconfiguration. They are available in #10 thru #18 shell sizes incorporating the .35 high-density platforms.



PART NUMBER	SHELL SIZE	NO. OF WAYS	FILTER CONFIG	Ø A	B	Ø C	D	E	F	G	H	J
AS1DD20-35PN9767	10	13	5nF LC	14.99	25.90	3.25	18.00	34.20	19.45	1.62	14.24	32.00
AS1DD22-35PN9767	12	22	5nF LC	19.04	29.10	3.25	22.50	34.20	19.45	1.62	17.41	35.20
AS1DD24-35PN9767	14	37	5nF LC	22.21	32.50	3.25	25.60	34.20	19.45	1.62	20.57	38.40
AS1DD26-35PN9767	16	55	5nF LC	25.39	34.80	3.25	28.80	34.20	19.45	1.62	23.74	41.00
AS1DD28-35PN9767	18	66	5nF LC	28.56	38.20	3.25	32.00	34.20	19.45	1.62	26.91	44.70
AS1DP20-35PN9767	10	13	10nF P	14.99	25.90	3.25	18.00	34.20	19.45	1.62	14.24	32.00
AS1DP22-35PN9767	12	22	10nF P	19.04	29.10	3.25	22.50	34.20	19.45	1.62	17.41	35.20
AS1DP24-35PN9767	14	37	10nF P	22.21	32.50	3.25	25.60	34.20	19.45	1.62	20.57	38.40
AS1DP26-35PN9767	16	55	10nF P	25.39	34.80	3.25	28.80	34.20	19.45	1.62	23.74	41.00
AS1DP28-35PN9767	18	66	10nF P	28.56	38.20	3.25	32.00	34.20	19.45	1.62	26.91	44.70

All dimensions are in mm unless otherwise stated.

AS Fibre Optic Solutions

High quality fibre optic contacts are available 10-02, 10-03, for any AS Series connector platform having size 16 contact locations, e.g. 12-04, 14-97, 16-08, 20-16, 20-39, 22-21 and 24-29.

The precision ceramic ferruled fibre optic contacts are available for high quality (Aerospace type specification) optic cables and silica glass fibres, enabling high speed, EMI / RFI immune data transmission. The optical contacts are designed to meet MIL-T-29504/5.





Gaskets

Designed specifically for the Deutsch Autosport flanged connectors, these gaskets are available from size 02 through to 24 shells.

Constructed from viton® rubber they assist in sealing the connectors to the mounting point and have been manufactured to withstand the temperatures, vibration and fluids found in the modern racing environment.

For part numbers please refer to page 47.



Nut Plates

Nut Plates are available for all AS two-hole flange mounted connector receptacles.

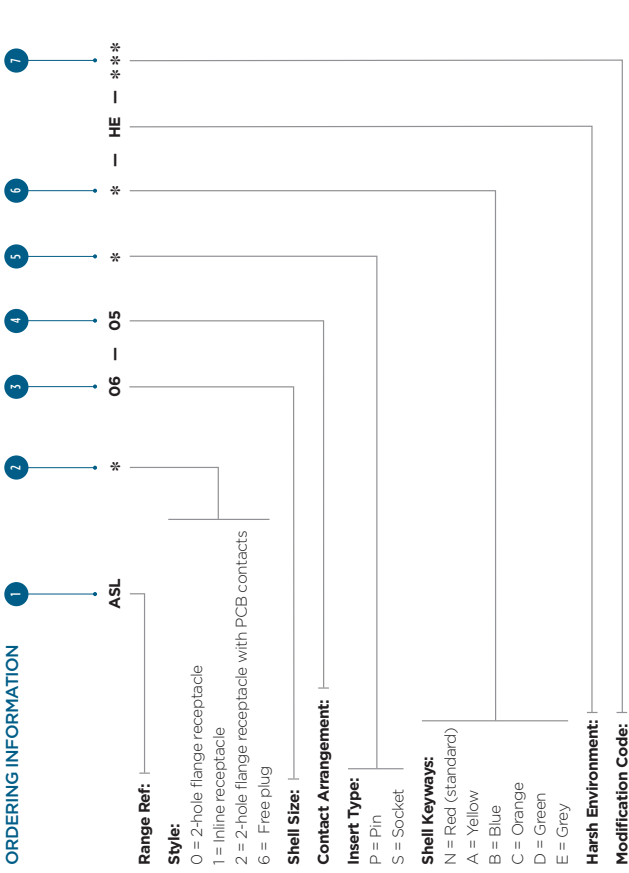
They are designed to simplify connector-to-bulkhead assembly, particularly in confined spaces, by eliminating the need to position loose nuts and washers. Nut plates are also anti-vibration and make assembly quicker and easier.

For part numbers please refer to page 47.

SHELL SIZE	MICRO BAND PRODUCT CODE
Up to #6.	600-057
Over #6.	600-085

BRAID TERMINATION SYSTEMS

The Micro Band System from Glenair is ideal for termination of screen braid. We recommend Hand Micro Banding Tool No: 600-061 for all Micro Bands. Micro Bands and the Banding Tool are available through our distributors.



All Deutsch Autosport part numbers work to the same principles. The part number is broken down into sections as follows:

- 'AS' indicates that it is an Autosport Connector - all Deutsch Autosport connectors start like this. There may be another letter after the AS - this designates a particular series. For example ASL = Micro^{III}, ASDD = Double Density.
 - The next major element is the connector style.
0 = 2 hole flanged receptacle
1 = Inline receptacle
2 = 2 hole flanged receptacle with fixed PCB contacts
3 = Through Bulkhead
4 = Weld mounting / Flangeless
7 = Jam-nut mounting
8 = Protective cap for plug
9 = Protective cap for receptacle
 - Relates to the required shell size. This will range from 02 (small) to 24 (large).
 - 'AS' indicates that it is an Autosport Connector - all Deutsch Autosport connectors start like this. There may be another letter after the AS - this designates a particular series. For example ASL = Micro^{III}, ASDD = Double Density.
 - Indicates the gender of a plug or receptacle. 'P' for pin or 'S' for socket.
 - Designates a keyway. Only connectors of the same keyway can mate. The options are: N, A, B, C, D, E or U for universal or no keyway option. The 'U' option should only be selected for test harnesses and not for racing applications.
 - After all these elements there may be a 4-character code, which designates a special modification. For instance this can be a special contact length or a non-standard plating finish. For more information on modification codes please contact the sales office on **+44 (0) 1424 857 088** or email **autosport@te.com**
- For details of the ordering procedure for your area, please contact the relevant local distributor. A list of these can be found on the reverse of this brochure or on our website **www.deutsch.net/autosport**

CONTACT TYPE

CONTACT SIZE	PART NO.	P/S	WIRE RANGE	COLOR/BAND	MAX CURRENT	CRIMP TOOL	POSITIONER	PLASTIC TOOLS INSERT/REMOVAL
Size 24 AS20 excluding 9-way	60579-31	P	24-30	None	3 AMPS	MZ250/2-0	610286 P	605837 Orange/White
	60571	S					610287 S	
Size 24 AS20 9 way, AS1 5/6, AS1 5 way	605705-31	P	24-30	None	3 AMPS	MZ250/2-01	605839 P	605837 Orange/White
	605704	S					605840 S	
Size 23	604927-31	P	22-28	None	3 AMPS	MZ250/2-01	604972 P	M8969/14-01 Green/White
	604955	S					604973 S	
Size 22	38941-22	P	22-26	Orange, Blue, Black	5 AMPS	MZ250/2-01	MZ250/2-09 P	M8969/14-01 Green/White
	38945-22	S		Orange, Yellow, Grey			MZ250/2-07 S	
Size 20	38941-20	P	20-24	Orange, Blue, Orange	7.5 AMPS	MZ250/2-01	MZ250/2-10 P	M8969/14-01 Red/Orange
	38946-20	S		Orange, Green, Brown			MZ250/2-10 S	
Size 16	38941-16	P	16-20	Orange, Blue, Yellow	20 AMPS	MZ250/1-01	MZ250/1-04 P	M8969/14-05 Blue/White
	38946-16	S		Orange, Green, Red			MZ250/1-04 S	
AS Mini Size 22	38941-22	P	22-26	Orange, Blue, Black	5 AMPS	MZ250/2-01	605800 P	M8969/14-01 Green/White
	604887	S		None			605800 S	
AS Mini Size 20	38941-20	P	20-24	Orange, Blue, Orange	7.5 AMPS	MZ250/2-01	MZ250/2-10 P	M8969/14-01 Red/Orange
	604946-31	S		None			MZ250/2-10 S	
Size 22 AS Composite/AS1 3-Way, ASX 3-Way	604984	P	22-28	None	5 AMPS	MZ250/2-01	605465 P	M8969/14-01 Green/White
	604984	S					605464 S	

BOOT INFORMATION

SHELL SIZE	STRAIGHT BOOT		90 DEGREE BOOT	
	RXCHEM	HELLERMAN	RXCHEM	HELLERMAN
ASX (Size 2)	203W001-25-603	1037-4-G	223W601	1182-4-G
AS1 (Size 3)	204W221-25-603	1037-4-G	224W221-25-603	1182-4-G
AS2	204W221	1030-4-G	224W221	1181-4-G
AS1	204W221	1030-4-G	224W221	1181-4-G
AS Mini	202K121	152-42-G	222K121	1152-4-G
08	202K121	152-42-G	222K121	1152-4-G
10	202K132	154-42-G	222K132	1154-4-G
12	202K142	155-42-G	222K142	1155-4-G
14	202K152	156-42-G	222K152	1156-4-G
16	202K163	156-42-G	222K163	1156-4-G
18	202K174	157-42-G	222K174	1157-4-G
20	202K185	157-42-G	222K185	1157-4-G
22	202K196	157-42-G	222K196	1157-4-G
24	202K207	157-42-G	222K207	1157-4-G

ACCESSORIES

SHELL SIZE	MUTIPRATE	GASKET	PLUG/RECEPTACLE	PROTECTIVE CAP
2 (ASX 3/5)	ATM936-2	GV-2	Plug Receptacle	61546 61545
2 (ASX 6 only)	ATM936-2	GV-2	Plug Receptacle	61637 61636
3/5 (AS1)	ATM936-3	GV-3	Plug Receptacle	605687 605684
6 (AS1)	ATM936-6	GV-6	Plug Receptacle	604027 604029
7 (Mini)	ATM936-7	GV-7	Plug Receptacle	ASX-07 ASX-07
08	ATM936-8	GV-8	Plug Receptacle	ASX-08 ASX-08
10	ATM936-10	GV-10	Plug Receptacle	ASX-10 ASX-10
12	ATM936-12	GV-12	Plug Receptacle	ASX-12 ASX-12
14	ATM936-14	GV-14	Plug Receptacle	ASX-14 ASX-14
16	ATM936-16	GV-16	Plug Receptacle	ASX-16 ASX-16
18	ATM936-18	GV-18	Plug Receptacle	ASX-18 ASX-18
20	ATM936-20	GV-20	Plug Receptacle	ASX-20 ASX-20
22	ATM936-22	GV-22	Plug Receptacle	ASX-22 ASX-22
24	ATM936-24	GV-24	Plug Receptacle	ASX-24 ASX-24

WIRE SIZES AND DIMENSIONS

CONTACT SIZE	WIRE SIZE (AWG)	FINISHED WIRE DIMENSIONS				INSULATION
		CONDUCTOR		MAX		
MIN	MAX	MIN	MAX	MIN	MAX	
24	30.28, 26.24	0.25mm 0.010in	0.51mm 0.02in	0.56mm 0.022in	1.02mm 0.040in	
23	28.26, 24.22	0.27mm .02in	0.790mm .031in	0.60mm .025in	1.37mm .054in	
22	26.24, 22	0.405mm .016in	0.790mm .031in	0.76mm .030in	1.37mm .054in	
20	24.22, 20	0.51mm .02in	0.970mm .038in	0.970mm .040in	2.11mm .083in	
16	20, 18, 16	0.82mm .031in	1.50mm .06in	1.50mm .06in	2.77mm .109in	

FILLER PLUGS

CONTACT SIZE	PART NUMBER
24	600300-24
23	600300-22
22	600300-22
20	600300-20
16	600300-16